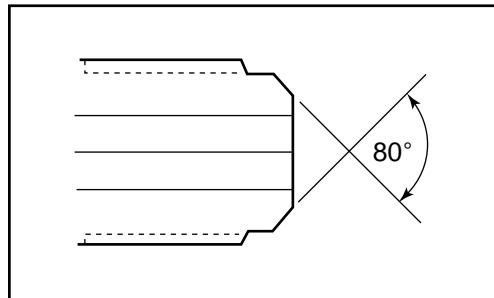


Adapters/Couplings - Male-to-Male BSPP One Piece Adapters

Autoclave Engineer's male-to-male one piece BSPP (British Standard Parallel Pipe Thread) adapters are available in a number of configurations. BSPP adapters are machined from cold worked stainless steel. Other materials available upon request. Contact your local Sales Representative for optional information. The following tables list our standard adapters with dimensions.



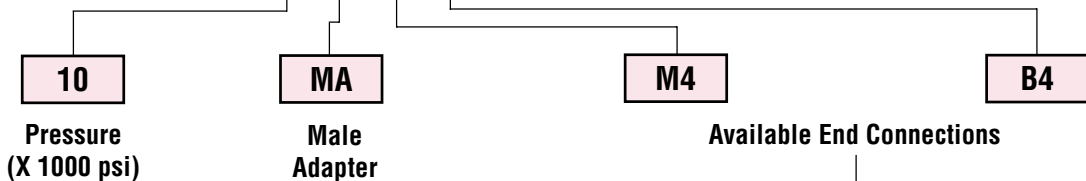
Adapter End Configuration



BSPP connections consist of an 80° included angle

Ordering Procedure

Typical catalog number: 20 MA M4 B4

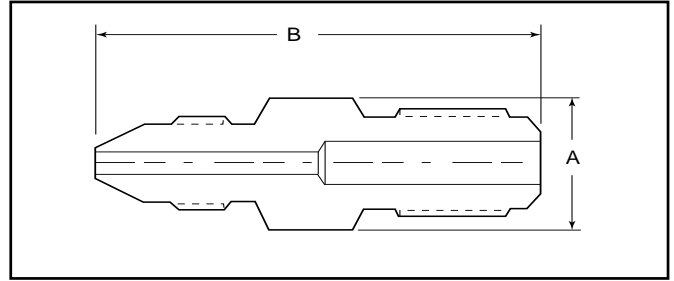


B4 - 1/4" BSPP	M4 - 1/4" Medium Pressure	H4 - 1/4" High Pressure	P4 - 1/4" NPT
B6 - 3/8" BSPP	M6 - 3/8" Medium Pressure	H6 - 3/8" High Pressure	P6 - 3/8" NPT
B8 - 1/2" BSPP	M9 - 9/16" Medium Pressure	H9 - 9/16" High Pressure	P8 - 1/2" NPT
	M12 - 3/4" Medium Pressure	RH9 - 9/16" Reverse High Pressure	
	M16 - 1" Medium Pressure	RH12 - 3/4" Reverse High Pressure	
		RH16 - 1" Reverse High Pressure	

Note: Special material one piece adapters may be supplied with four flats in place of standard hex.

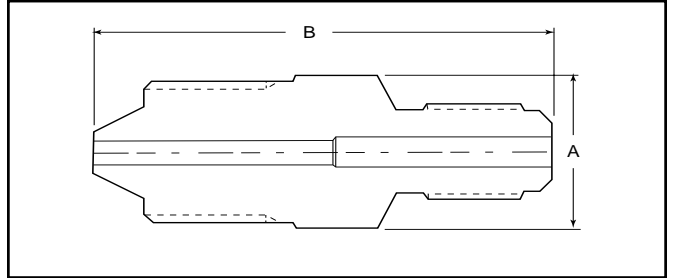
Medium-Pressure to BSPP Adapters

Catalog Number	Connection M/P	Connection BSPP	Dimension inches (mm)	
			A Hex	B
10MAM4B4	SF250CX	1/4"	0.63 (15.9)	1.81 (46.0)
10MAM6B4	SF375CX	1/4"	0.63 (15.9)	1.94 (49.3)
10MAM9B4	SF562CX	1/4"	0.81 (20.6)	2.25 (57.2)
10MAM12B4	SF750CX	1/4"	1.88 (30.2)	2.63 (66.8)
10MAM16B4	SF750CX	1/4"	1.38 (34.9)	3.25 (82.6)



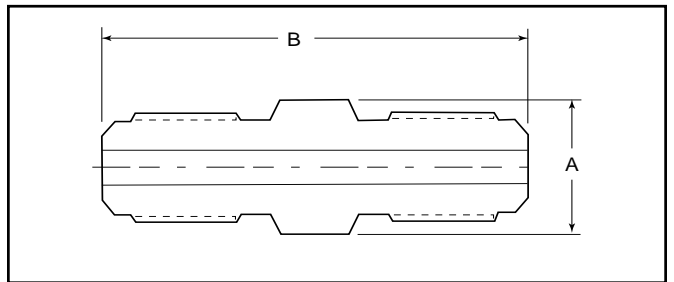
High-Pressure to BSPP Adapters

Catalog Number	Connection H/P	Connection BSPP	Dimension inches (mm)	
			A Hex	B
10MAH4B4	F250C	1/4"	0.63 (15.9)	1.75 (44.5)
10MAH6B4	F375C	1/4"	0.81 (20.6)	2.13 (54.1)
10MAH9B4	F562C	1/4"	1.88 (30.2)	2.56 (65.0)



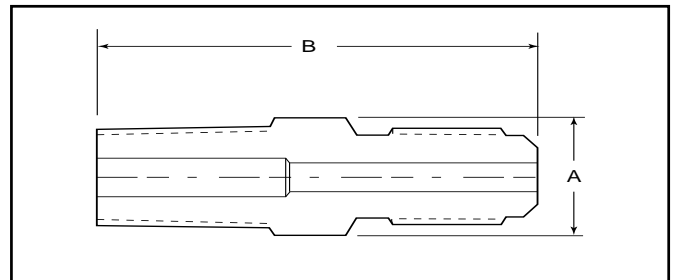
BSPP to BSPP Adapters

Catalog Number	Connection BSPP	Connection BSPP	Dimension inches (mm)	
			A Hex	B
10MAB4B4	1/4"	1/4"	0.63 (15.9)	1.81 (46.0)



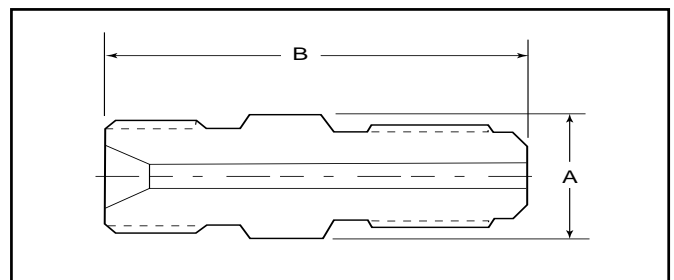
NPT to BSPP Adapters

Catalog Number	Connection NPT	Connection BSPP	Dimension inches (mm)	
			A Hex	B
10MAP4B4	1/4"	1/4"	0.63 (15.9)	1.75 (44.5)
10MAP6B4	3/8"	1/4"	0.75 (19.1)	1.88 (30.2)
10MAP8B4	1/2"	1/4"	0.94 (23.8)	2.13 (54.1)



Reverse High Pressure to BSPP Adapters

Catalog Number	Connection R/H	Connection BSPP	Dimension inches (mm)	
			A Hex	B
10MARH9B2	9/16"	1/8"	0.63 (15.9)	1.56 (39.6)
10MARH9B4	9/16"	1/4"	0.63 (15.9)	1.56 (39.6)
10MARH12B4	3/4"	1/4"	0.81 (20.6)	1.81 (46.0)
10MARH16B4	1"	1/4"	1.00 (25.4)	2.00 (50.8)



Maximum pressure rating is based on the lowest rating of any component. Actual working pressure may be determined by tubing pressure rating, if lower.

All Dimensions for reference only and are subject to change.

Note: For pressure rating see selection chart.

For prompt service, Autoclave stocks select products. Consult factory.

All general terms and conditions of sale, including limitations of our liability, apply to all products and services sold.